



Our Research is Your Success...

This study was not sponsored by MIS!

August
2011

Published in:

Implant Dentistry

”

Retrospective Multicenter
Evaluation of Tapered Implant With
a Sandblasted and Acid-Etched
Surface at 1 to 4 Years of Function”*

Min-Su Bae, DDS, Dong-Seok Sohn, DDS, PhD, Mi-Ra Ahn, DDS, Hyun-Woo Lee, DDS, Heui-Seung Jung, DDS, and Im-Hee Shin, MD, PhD

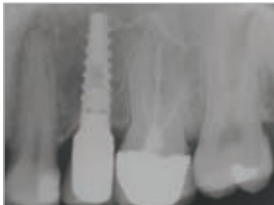
* ISSN 1056-6163/11/02004-280, Implant Dentistry, Volume 20, Number 4, Copyright © 2011 by Lippincott Williams & Wilkins, DOI: 10.1097/ID.0b013e318218123b



¹Min-Su Bae
²Dong-Seok Sohn
³Mi-Ra Ahn
⁴Hyun-Woo Lee
⁴Heui-Seung Jung
⁵Im-Hee Shin

“Retrospective Multicenter Evaluation of Tapered Implant With a Sandblasted and Acid-Etched Surface at 1 to 4 Years of Function”

ABSTRACT.



Periapical radiograph taken 12 months after loading.



Implant placement using handpiece.

Purpose

The aim of this retrospective study was to evaluate the cumulative survival rate of tapered implant with a sandblasted and acid-etched surface placed in edentulous patients.

Materials and Methods

A retrospective study was performed by evaluating MIS seven implants consecutively placed from December 2004 to January 2008. Patient records were reviewed to determine gender, age at implant placement, implant location, prosthesis type, marginal bone loss according to treatment procedure, number of implants, and number of failed implants. The survival rate of the implants was analyzed, and radiographic evaluation was performed.

Results

A total of 294 implants were placed in 92 patients at the 3 centers. The observation period after implantation ranged from 22 to 59 months, with a mean of 38 months. The cumulative survival rate of MIS seven implants was 97.3%. After 1 year of functional loading, the mean marginal bone loss was 0.33 mm.

Conclusion

This retrospective, multicenter study demonstrates that this dental implant system gives clinically reliable results.

Authors' affiliations

¹ Resident, Department of Dentistry and Oral and Maxillofacial Surgery, Catholic University Hospital of Daegu, Daegu, Republic of Korea.

² Chairman, Department of Dentistry and Oral and Maxillofacial Surgery, Catholic University Hospital of Daegu, Daegu, Republic of Korea

³ Clinical Instructor, Department of Dentistry and Oral and Maxillofacial Surgery, Catholic University Hospital of Daegu, Daegu, Republic of Korea.

⁴ Private Practice, Daegu, Republic of Korea.

⁵ Associate Professor, Department of Medical Statistics, Catholic University Hospital of Daegu, Daegu, Republic of Korea.